

## Topik: Kastom Marit

Waef  
fo  
Tolo



Wanfala ivining, mami an dadi blong Tolo askem hem olsem, “?Waswe, yu laek fo marit nao o weit fastaem?” Tolo hem sidaon kuaet fo lelebet taem an den hem sei hem laek nao fo marit.

Narade bihaen, dadi blong Tolo hem go an talem olketa ankol blong Tolo an olketa sei hem oraet. Olketa hapi fo helpem hem baem gele ya fo Tolo.

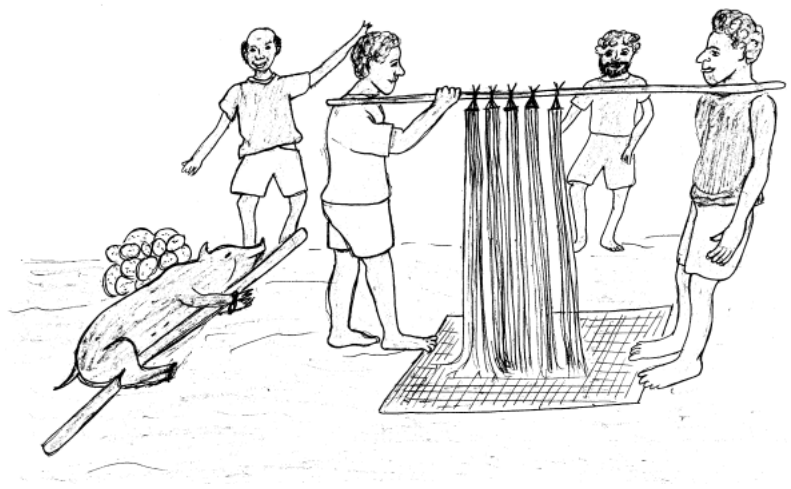
Bihaen wanfala wiki, dadi an bik ankol blong Tolo tufala go long nara vilij fo talem inlo blong tufala fo lukaotem wanfala gele long vilij ya fo Tolo.

Bihaen nara tufala wiki moa, dadi blong Tolo hemi talem evri brata an ankol blong hem fo

tekem kam nao olketa red mani fo baem gele fo Tolo.

Dadi an ankol blong Tolo go baek moa fo lukim an herem nius long inlo blong tufala. Inlo blong tufala hemi siusim finis wanfala gele. Taem tufala kasem hem, olketa go stret nao fo askem gele ya long famili blong hem.

Taem olketa stori finis wetem mami an dadi blong gele ya, olketa askem gele ya nao an hem sei oraet. So dadi blong Tolo hem givim tufala red mani fo mami an dadi blong gele fo mektambu long hem nao.



Bihaen trifala manis, olketa pipol blong Tolo tekem lelebet kaikai wetem olketa red mani an go long famili blong gele ya. Olketa baem gele ya long faefala red mani. Taem olketa baem gele ya finis, olketa lidim go long haos blong Tolo. Long naet, evriwan long vilij hipap an kaikai long bikfala pati.



## Waef fo Tolo

Wanfala ivining, mami an dadi blong Tolo askem hem olsem, “?Waswe , yu laek fo marit nao o weit fastaem?” Tolo hem sidaon kuaet fo lelebet taem an den hem sei hem laek nao fo marit.

Narade bihaen, dadi blong Tolo hem go an talem olketa ankol blong Tolo an olketa sei hem oraet. Olketa agri fo helpem hem baem gele ya fo Tolo.



Tokabaotem

1. ?Wae nao Tolo sidaon kuaet taem dadi blong hem askem fo marit?
2. ?Wae nao hem impoten fo talem olketa ankol an brata taem boe o gele hem redi fo marit?



Mekem wanfala list long olketa wea save help long marit. Eksampol: ankol,

\_\_\_\_\_, \_\_\_\_\_, \_\_\_\_\_, \_\_\_\_\_



Waka wetem wod

I i

Wanfala ivining mami an dadi stori wetem Tolo.



ivining	inlo	ilfis
i	i	i

i	i	i	i	i
igo	is	in	in	il
igol	isi	inlo	inaf	ilfis

*Tingim samfala wod moa wea hem stat wetem 'i'.*

*Raetem samfala leta an wod ya insaet long buk blong yu.*



I i I i I i I i I i I i I i I i I i

ivining inlo isi mami hemi

Dadi hemi go long olketa brata an ankol.

Stori aboatem kastom blong yu.

Long Solomon Aelan yumi evriwan garem deferen kaen mani an wei fo peim gele. Long samfala olketa no save peim gele. Tokabaotem kastom blong vilij blong yu.



## Talem inlo fo lukaotem gele

Bihaen wanfala wiki, dadi an bik ankol blong Tolo tufala go long nara vilij fo talem inlo blong tufala fo lukaotem wanfala gele long vilij ya fo Tolo.

Bihaen nara tufala wiki moa, dadi blong Tolo hemi talem evri brata an ankol blong hem fo tekem kam nao olketa red mani fo baem gele fo Tolo.



**Tokabaotem**

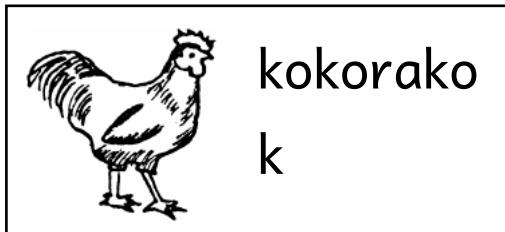
1. ?Wat kaen gele yu tingse dadi an ankol blong Tolo talem long inlo blong tufala fo lukaotem?
2. Long ples ya, wat kaen mani nao yufala yusim fo peim gele long hem.



# Waka wetem wod

K k

Bihaen wanfala wiki bik ankol go long nara vilij.



kokorako

k

kanu	kasem
k	k

a	e	i	o	u
ka	ke	ki	ko	ku
kap	kek	kilim	kokonat	kumara

*Faendem olketa 'k' saon insaet long stori blong tude.*

*Raetem samfala leta an wod ya insaet long buk blong yu.*



K k K k K k K k K k K k K k

kokorako kap kilim wiki ankol

Bik ankol talem inlo long lukaotem wanfala gele.

**?Waswe you save?**



Famili blong boe olketa no peim gele fo gele duim waka o fo boe gohed fo hitim nomoa. Gele hem kam fo helpem boe an fo joenem moa laen blong boe ya.



## Stori wetem famili blong gele ya

Dadi an ankol blong Tolo go baek moa fo lukim an herem nius long inlo blong tufala. Inlo blong tufala hemi siusim finis wanfala gele. Taem tufala kasem hem, olketa go stret nao fo askem gele ya long famili blong hem.



Tokabaotem

1. ?Long famili blong yu, hu nao save askem gele fo marit?
2. ?Wat nao tingting blong yu sapos yu askem wanfala gele bat gele ya les long boe blong yu?

**?Waswe yu save?**



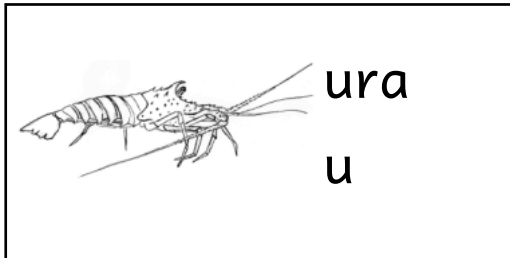
Fo mektambu long gele hem minim tufala famili laekim fo boe an gele blong olketa save marit. Famili blong boe save givim mani fo soim olketa laekim.



Waka wetem wod

U u

Dadi an ankol go baek fo lukim inlo.



lukim	buk
u	u

u	u	u	u
ur	lu	su	ku
ura	lukim	suga	kukim

*Tingim samfala wod moa wea hem stat wetem 'u'.*

*Raetem samfala leta an wod ya insaet long buk blong yu.*



U u U u U u U u U u U u U u U u

lukim                      gud                      kukim                      suga

Dadi an ankol go baek fo lukim inlo.



Raetem samfala samting wea

olketa saed blong boe save tekem kam fo peim gele.

? Hamas fala wod nao yu save mekem long olketa saon ya?

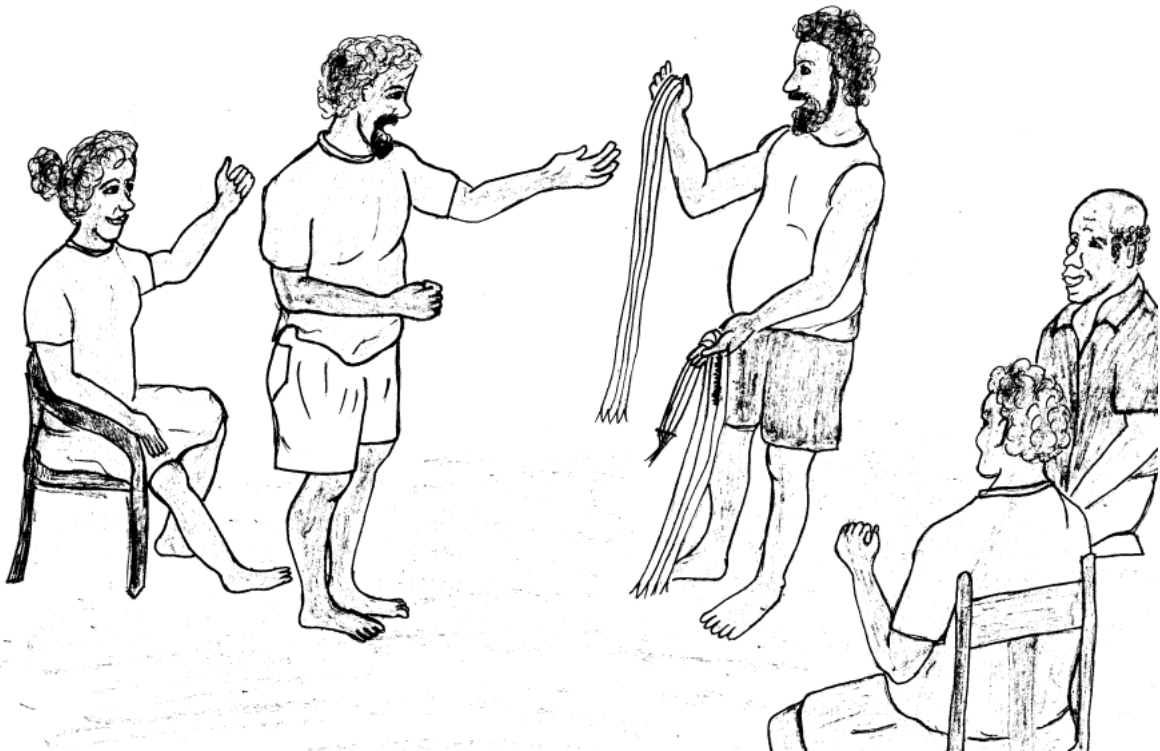
bu	k	kim
ma	ku	ap
n	ha	sa





## Gele hem sei oraet

Taem olketa stori finis wetem mami an dadi blong gele ya, olketa askem gele ya nao an hem sei oraet. So dadi blong Tolo hem givim tufala red mani fo mami an dadi blong gele fo mektambu long hem nao.



Tokabaoten

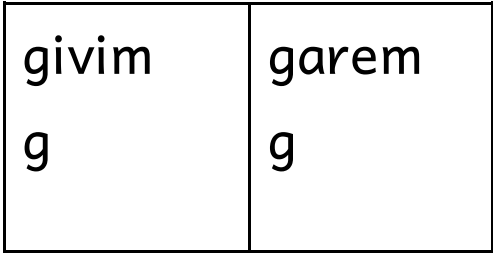
1. ?Wat nao samfala gudfala toktok wea mami an dadi blong gele ya save talem long gele taem olketa mektambu long hem finis?
2. ?Wat nao boe save duim fo mek rere fo marit blong hem?



Waka wetem wod

G g

Olketa askem gele ya nao an hem sei oraet.



a	e	i	o	u
ga	ge	gi	go	gu
gaden	gele	givim	gogo	gud

*Tingim samfala wod moa wea hem stat wetem 'g'.*

*Raetem samfala leta an wod ya insaet long buk blong yu.*



G g G g G g G g G g G g G g

gele givim gogo gaden garem

Olketa askem gele ya nao an hem sei oraet.

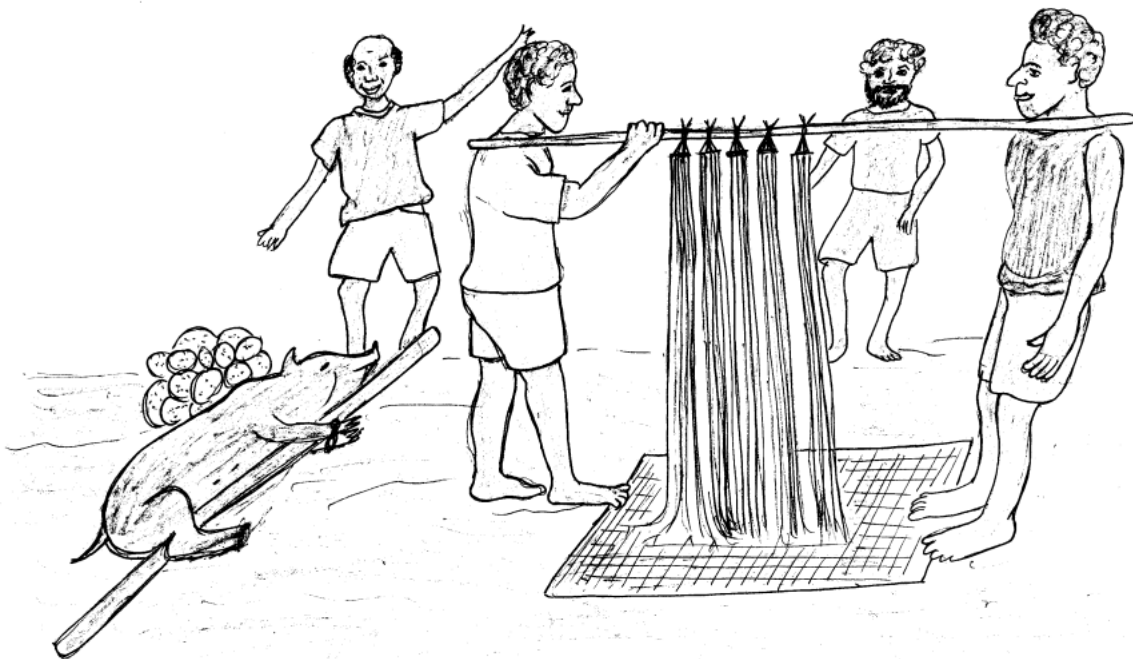


Raetem sentens abaotem hao Tolo hemi fil taem olketa go askem gele fo hem an gele ya sei oraet fo maritim hem.



## Gele maritim Tolo

Bihaen trifala manis, olketa pipol blong Tolo tekem lelebet kaikai wetem olketa red mani an go long famili blong gele ya. Olketa baem gele ya long faefala red mani.



Taem olketa baem gele ya finis, olketa lidim go long haos blong Tolo. Long naet, evriwan long vilij hipap an kaikai long bikfala pati.

Tokabaotem

1. ?Wat nao dadi save talem long gele blong hem taem pipol blong Tolo olketa kam fo tekem hem?
2. ?Olketa hu nao save go long taem fo peim gele?

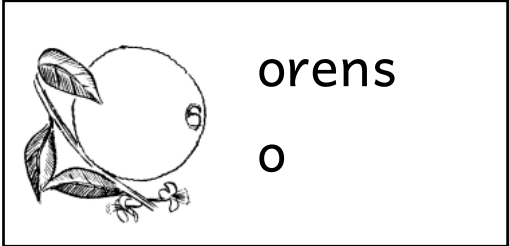


# Waka wetem wod

O o

Olketa pipol blong Tolo tekem olketa red mani an go long famili blong gele.

olketa	olsem
o	o



o	o	o	o	o
ol	ol	on	ol	olo
olketa	olwan	ona	olsem	olowe

*Faendem olketa 'o' saon insaet long stori blong tude.*

*Raetem olketa leta an wod ya insaet long buk blong yu.*



O o O o O o O o O o O o O o O o

olketa                  orens                  olwan                  go                  Tolo



Talemaot samfala fasin wea yu laekem long eni boe o gele wea yu bae siusim fo maritim. Listim olketa long blakbod. Lukim samfala wod hemi stap long list an raetem long buk blong yu.